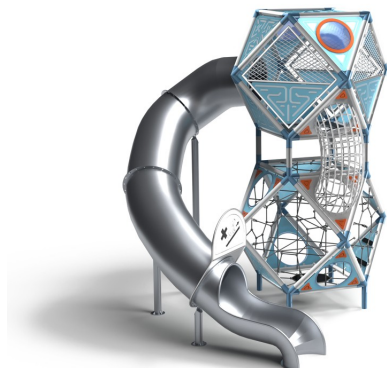


SFERO SPACE 2-2

Code: 01-SF-722-X-S



Physical



Social-emotional



Sliding down



Sitting



Climbing



Socialisation



Balancing



Shelter



Getting across



Resting

Description

The **SFERO SPACE 2-2 Playset** is an outstanding playground attraction that can become the centerpiece of any play area. With its impressive structure, modern design, and geometric precision, it draws attention from afar and invites exploration. Children can discover Sfero through climbing, exploration, and adventure – each experience offering endless fun and creative physical activity. The set develops coordination, strength, and spatial imagination, while its stable structure guarantees full safety. The Sfero Space 2-2 combines modern engineering with striking design, creating a play structure that is both safe and visually impressive.

The **SFERO SPACE 2-2 Playset** consists of two interconnected spherical modules and one long curved tube slide. Each sphere is an Archimedean solid – featuring octagonal symmetry and equilateral radial construction – forming an extremely stable structure that ensures the highest level of user safety. Each spherical module includes 24 identical edges, forming structural tubes made of steel (Ø 88.9 mm, wall thickness 2.6 mm), hot-dip galvanized and powder-coated. The modules are connected using an innovative internal sleeve system, which provides strong and durable joints – maintaining stability even during intensive play by up to 19 children.

*An optional version with a plastic slide is also available.

Playground device consists of

- 4 supporting posts for the main structure
- 3 slide support posts
- 1 long curved tubular slide
- 8 triangular milled panels
- 2 porthole openings
- 1 square milled roof panel
- 2 internal triangular entrance ramps
- 4 square climbing panels
- 1 black rubber resting platform
- 4 triangular steel plates with openings
- 3 steel mesh panels
- 1 steel tunnel
- 24 corner connectors

Technical Data

- Dimensions (LxWxH): $4.07 \times 3.83 \times 4.62$ m
- Safety area (LxW): 7.50×6.60 m
- Maximum fall height: 2.76 m
- Age group: 6+
- Number of users: 19
- Dimensional tolerance: $\pm 5\%$

Materials

- Structure made of S235 structural steel, hot-dip galvanized and powder-coated. Tubes \varnothing 88.9 mm, wall thickness 2.6 mm.
- Ropes (\varnothing 16 mm) reinforced with a steel core, built with a fiber core and steel braid, covered with UV-resistant and flame-retardant polypropylene fibers.
- Modular assembly system based on repetitive components and corner connectors.
- Stainless-steel slide – matt-finished with light windows, wall thickness 2 mm.
- Mesh panels – made of anti-corrosion protected steel, powder-coated.
- Milled panels – triangular and square, made of 15 mm HDPE boards.
- Entrance ramp – steel frame covered with HPL board.
- Internal ramp steps – anti-slip HPL.
- Platform (resting area) – black rubber, reinforced.
- Portholes – 3 mm polycarbonate.
- Frame color: RAL 7035 and RAL 5024.
- Decorative elements: light blue and orange HDPE, thickness 15 mm.

All images are for illustrative purposes only and may vary from the actual product.

